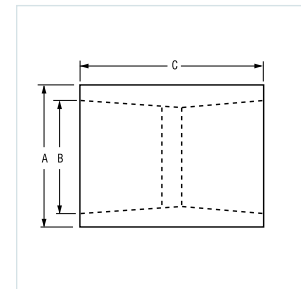


COUPLINGS

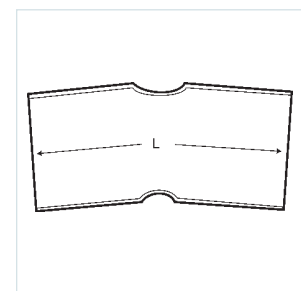
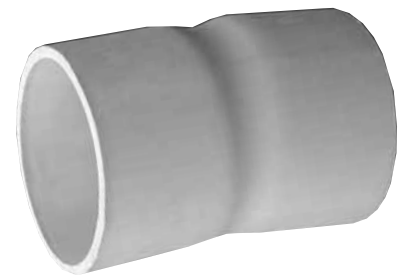
COUPLINGS

Size (inches)	Part Number	Product Code	A (inches)	B (inches)	C (inches)
1/2	EC10	068000	1.060	0.844	1.400
3/4	EC15	068001	1.310	1.056	1.640
1	EC20	077003	1.590	1.315	2.031
1-1/4	EC25	077004	2.000	1.660	2.156
1-1/2	EC30	077005	2.230	1.900	2.281
2	EC35	077006	2.720	2.375	2.406
2-1/2	EC40	077007	3.320	2.875	3.187
3	EC45	077008	4.000	3.500	3.437
3-1/2	EC50	077009	4.500	4.000	3.625
4	EC55	077010	5.000	4.500	3.750
5	EC60	077011	6.120	5.563	4.187
6	EC65	077012	7.370	6.625	4.562

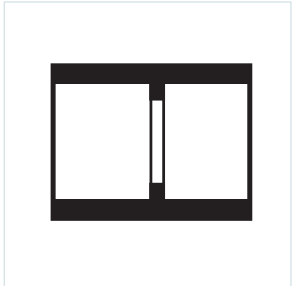


5° COUPLINGS

Size (inches)	Part Number	Product Code	L (inches)
2	5EC35	077100	4.0
2-1/2	5EC40	077101	5.5
3	5EC45	077103	6.0
3-1/2	5EC50	077102	7.0
4	5EC55	077104	7.0
5	5EC60	077105	7.5
6	5EC65	077106	11.0



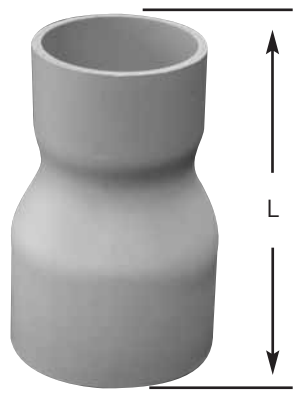
LONG LINE COUPLINGS



Size (inches)	Part Number	Product Code	A (inches)
1-1/2	LLC30	077192	3.175
2	LLC35	077193	3.675
2-1/2	LLC40	077194	4.280
3	LLC45	077195	4.800
4	LLC55	077196	6.200
5	LLC60	077197	8.220
6	LLC65	077198	8.220

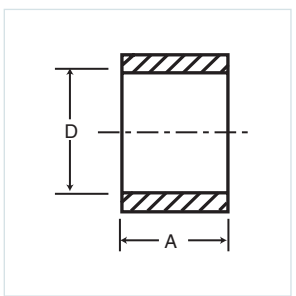
FABRICATED SWEDGE REDUCER COUPLINGS

(Socket x Socket) Other sizes available upon request.



Size (inches)	Part Number	Product Code	L (inches)
2 x 1-1/4	SW3525	077320	4
3 x 2	SW4535	077321	6
3 x 2-1/2	SW4540	077335	6.5
4 x 2	SW5535	077322	7
4 x 2-1/2	SW5540	069282	-
4 x 3	SW5545	077333	7

REPAIR COUPLING SLEEVE



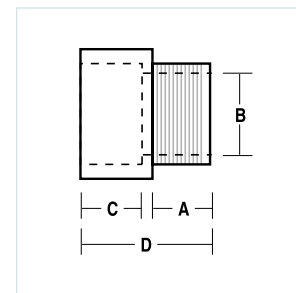
Size (inches)	Part Number	Product Code	A (inches)	D Min (inches)	D Max (inches)
1-1/2	REC30	077292	2.300	1.912	1.924
2	REC35	077293	2.405	2.367	2.399
2-1/2	REC40	077294	3.450	2.883	2.897
3	REC45	077295	3.600	3.507	3.523
4	REC55	077296	3.920	4.506	4.524
5	REC60	077297	4.275	5.583	5.603
6	REC65	077298	4.620	6.647	6.669

ADAPTERS

TERMINAL ADAPTERS

1/2" - 1-1/4" Tapered Thread; 1-1/2" - 6" Non-Tapered Thread

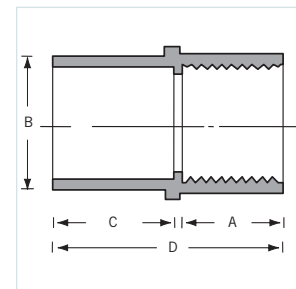
Size (inches)	Part Number	Product Code	A (inches)	B (inches)	C (inches)	D (inches)
1/2	TA10	077021	0.700	0.591	0.750	1.550
3/4	TA15	077022	0.675	0.790	1.000	1.750
1	TA20	077023	0.625	1.000	1.115	1.860
1-1/4	TA25	077024	0.640	1.311	1.300	2.125
1-1/2	TA30	077025	0.725	1.530	1.425	2.250
2	TA35	077026	0.800	1.970	1.150	2.100
2-1/2	TA40	077027	0.800	2.346	1.900	2.930
3	TA45	077028	0.815	2.915	2.000	3.055
3-1/2	TA50	077029	1.000	3.385	1.715	3.055
4	TA55	077030	0.815	3.850	1.990	3.215
5	TA60	077031	1.725	5.015	2.000	5.985
6	TA65	077032	1.875	6.025	2.130	6.500



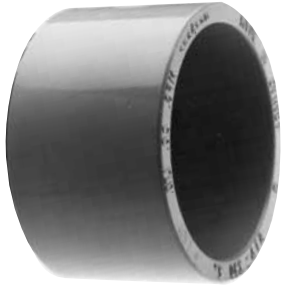
FEMALE ADAPTERS

NPT Tapered Thread

Size (inches)	Part Number	Product Code	A (inches)	B (inches)	C (inches)	D (inches)
1/2	FA10	077041	0.800	0.620	0.825	1.725
3/4	FA15	077042	0.800	0.820	1.000	1.900
1	FA20	077043	1.000	1.065	1.200	2.300
1-1/4	FA25	077044	1.015	1.395	1.300	2.425
1-1/2	FA30	077045	1.050	1.575	1.290	2.440
2	FA35	077046	1.075	2.050	1.375	2.550
2-1/2	FA40	077047	1.675	2.470	1.985	3.760
3	FA45	077048	1.630	3.090	2.150	4.100
3-1/2	FA50	077049	1.800	3.540	2.000	3.985
4	FA55	077050	1.755	4.025	2.185	4.210
5	FA60	077051	2.065	5.035	3.000	5.240
6	FA65	077052	2.065	6.045	3.000	5.235



REDUCER BUSHINGS



Size (inches)	Part Number	Product Code
3/4 x 1/2	1805	077300
1 x 1/2	1805-1	077301
1 x 3/4	1806	077302
1-1/4 x 3/4	1807-1	077303
1-1/4 x 1	1807	077304
1-1/2 x 1	1808-1	077305
1-1/2 x 1-1/4	1808	077306
2 x 1	1809-1	077313
2 x 1-1/4	1809	077307
2 x 1-1/2	1810	077308
2-1/2 x 2	1811	077309
3 x 2	1812-1	077310
3 x 2-1/2	1812	077311
4 x 2	1813-1	077319
4 x 3	1813	077312
4 x 3-1/2	1814	077317

THREADED REDUCER BUSHINGS



Size (inches)	Part Number	Product Code
3/4 x 1/2	1825	077314
1 x 1/2	1826	077315
1 x 3/4	1827	077316

END CAPS

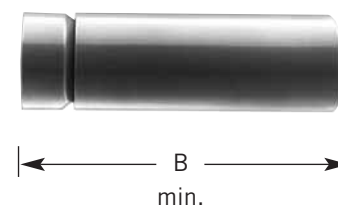
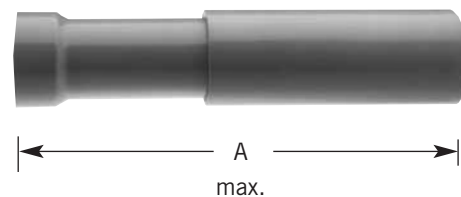
END CAPS

Size (inches)	Part Number	Product Code
1/2	CAP10	077421
3/4	CAP15	077422
1	CAP20	077423
1-1/4	CAP25	077424
1-1/2	CAP30	077425
2	CAP35	077426
2-1/2	CAP40	077427
3	CAP45	077428
3-1/2	CAP50	077429
4	CAP55	077430
5	CAP60	077431
6	CAP65	077432



“O” RING EXPANSION JOINTS

Size (inches)	Part Number	Product Code	A (in.) max.	B (in.) min.	Travel (inches)
1/2	EJ10	077381	12.00	8.00	4
3/4	EJ15	077382	12.00	8.00	4
1	EJ20	077383	12.50	8.50	4
1-1/4	EJ25	077384	13.00	9.00	4
1-1/2	EJ30	077385	13.00	9.00	4
2	EJ35	077386	13.25	9.25	4
2-1/2	EJ40	077387	13.25	9.25	4
3	EJ45	077388	22.25	14.25	8
3-1/2	EJ50	077389	22.25	14.25	8
4	EJ55	077390	22.25	14.25	8
5	EJ60	077391	22.25	14.25	8
6	EJ65	077392	22.25	14.25	8



EXPANSION JOINTS



TA SPECIAL EXPANSION JOINT

Size (inches)	Part Number	Product Code
2-1/2	EJ40TA	077398

ONE-PIECE EXPANSION COUPLING



Size (inches)	Part Number	Product Code
1/2	OPEJ10	077018
3/4	OPEJ15	077019
1	OPEJ20	077053
1-1/4	OPEJ25	077054
1-1/2	OPEJ30	077061
2	OPEJ35	077063

EXPANSION & DEFLECTION FITTING ASSEMBLIES



Size (inches)	Part Number	Description	Product Code
2	SE-J-35	Complete Assembly	077889
3	SE-J-45	Complete Assembly	077890
4	SE-J-55	Complete Assembly	077891

The National Electrical Code requires the use of expansion fittings for RNC to compensate for thermal expansion & contraction. For more information consult the NEC 2002 Article 352.44 and review the expansion and contraction information on pages 11, 12 and 13 of this brochure.

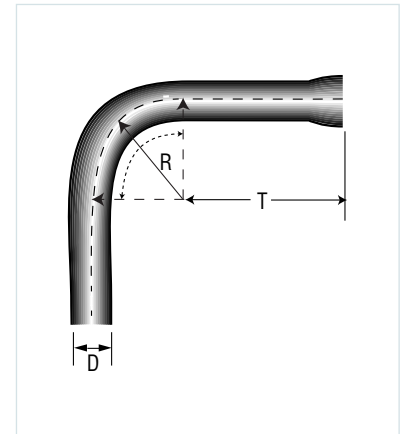
ELBOWS

UL SPECIAL RADIUS 90° ELBOWS

c/w Solvent Bell End

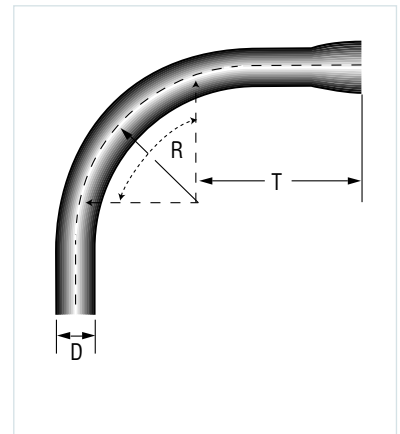
Size (inches)	Part Number	Product Code	D (inches)	T (inches)	R (inches)
2	NSL 2-24	068725	2.375	2.000	24.00
2	NSL 2-36	068765	2.375	2.000	36.00
3	NSL 3-24	068727	3.500	3.125	24.00
3	NSL 3-36	068767	3.500	3.125	36.00
4	NSL 4-36	068769	4.500	3.375	36.00
4	NSL 4-48	068789	4.500	3.375	48.00
5	NSL 5-36	068771	5.563	3.625	36.00
6	NSL 6-36	068772	6.625	3.370	36.00

Note: Other sizes are available and in stock. Consult your IPEX price list.

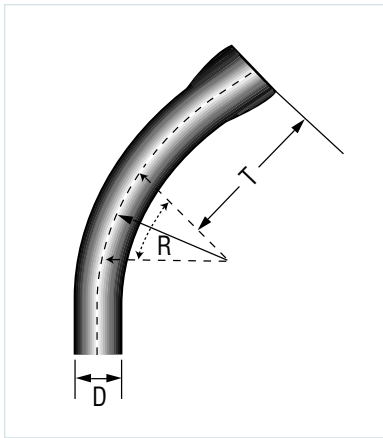


UL 90° ELBOWS

Size (inches)	Pro/code Bell End	Pro/code Plain End	D (inches)	T (inches)	R (inches)
1/2	068420	068580	0.840	1.500	4.00
3/4	068421	068581	1.050	1.500	4.50
1	068422	068582	1.315	1.875	5.75
1-1/4	068423	068583	1.660	2.000	7.25
1-1/2	068424	068584	1.900	2.000	8.25
2	068425	056858	2.375	2.000	9.50
2-1/2	068426	068586	2.875	3.000	10.50
3	068427	068587	3.500	3.125	13.00
3-1/2	068428	068588	4.000	3.250	15.00
4	068429	068589	4.500	3.375	16.00
5	068430	068591	5.563	31.700	24.00
6	068431	068592	6.625	31.700	36.00



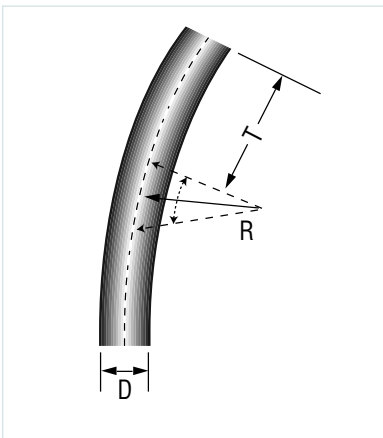
UL 45° ELBOWS



Size (inches)	Pro/code Bell End	Pro/code Plain End	D (inches)	T (inches)	R (inches)
1/2	068561	068600	0.840	1.500	4.00
3/4	068562	068601	1.050	1.500	4.50
1	068563	068602	1.315	1.875	5.75
1-1/4	068564	068603	1.660	2.000	7.25
1-1/2	068565	068604	1.900	2.000	8.25
2	068566	068605	2.375	2.000	9.50
2-1/2	068567	068606	2.875	3.000	10.50
3	068568	068607	3.500	3.125	13.00
3-1/2	068569	068608	4.000	3.250	15.00
4	068570	068609	4.500	3.375	16.00
5	068571	068611	5.563	3.625	24.00
6	068572	068612	6.625	3.750	30.00

UL 30° ELBOWS

Plain End x Plain End



Size (inches)	Part Number	Product Code	D (inches)	T (inches)	R (inches)
1/2	EE1030	068620	0.840	1.500	4.00
3/4	EE1530	068621	1.050	1.500	4.50
1	EE2030	068622	1.315	1.875	5.75
1-1/4	EE2530	068623	1.660	2.000	7.25
1-1/2	EE3030	068624	1.900	2.000	8.25
2	EE3530	068625	2.375	2.000	9.50
2-1/2	EE4030	068626	2.750	3.000	10.50
3	EE4530	068627	3.500	3.125	13.00
3-1/2	EE5030	068628	4.000	3.250	15.00
4	EE5530	068629	4.500	3.375	16.00
5	EE6030	068631	5.563	3.625	24.00
6	EE6530	068632	6.625	3.750	30.00

PIPE STRAPS

PIPE STRAPS PVC

2 Hole

Size (inches)	Part Number	Product Code
1/2	PS10	077811
3/4	PS15	077812
1	PS20	077813
1-1/4	PS25	077814
1-1/2	PS30	077815
2	PS35	077816



PIPE STRAPS POLYETHYLENE (PE)

2 Hole

Size (inches)	Part Number	Product Code
2-1/2	PS40	077262
3	PS45	077263
4	PS55	077264



PIPE STRAPS COATED STEEL

2 Hole

Size (inches)	Part Number	Product Code
2	CS35	077818
2-1/2	CS40	077819
3	CS45	077820
3-1/2	CS50	077821
4	CS55	077822
5	CS60	077824
6	CS65	077823



CLAMPS & WALL SPACERS

PIPE STRAPS COATED STEEL

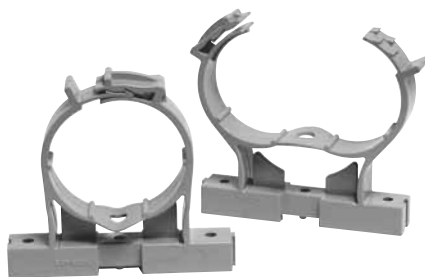
1 Hole



Size (inches)	Part Number	Product Code
1/2	CS10-1	077831
3/4	CS15-1	077832
1	CS20-1	077833
1-1/4	CS25-1	077834
1-1/2	CS30-1	077835
2	CS35-1	077836
2-1/2	CS40-1	077837
3	CS45-1	077838
3-1/2	CS50-1	077839
4	CS55-1	077840

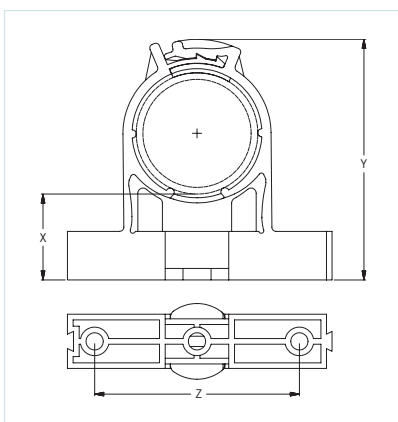
CONDUIT FITTINGS

NONMETALLIC CONDUIT CLAMPS & WALL SPACERS



Size (inches)	Part Number	Product Code	X (inches)	Y (inches)	Z (inches)
1/2	CCS10	077794	1.191	2.414	1.824
3/4	CCS15	077796	1.195	2.660	2.106
1	CCS20	077797	1.215	2.962	2.443
1-1/4	CCS25	077798	1.182	3.300	2.855
1-1/2	CCS30	077799	1.193	3.600	3.170
2	CCS35	077800	1.195	4.135	3.785
Base	CCS-B	077343	-	-	-

Note: CCS-B are sold individually, two pieces are required to create one base unit.



ACCESS FITTINGS

ACCESS FITTINGS* TYPE LB

Hub Size (inches)	Part Number	Product Code
1/2	SLB10S	077541
3/4	SLB20S	077542
1	SLB30S	077543
1-1/4	SLB40S	077544
1-1/2	SLB50S	077545
2	SLB60S	077546
2-1/2	SLB70S	077547
3	SLB80S	077548
3-1/2	SLB90S	077549
4	SLB100S	077550



ACCESS FITTINGS* TYPE LR

Hub Size (inches)	Part Number	Product Code
1/2	SLR10S	077481
3/4	SLR20S	077482
1	SLR30S	077483
1-1/4	SLR40S	077484
1-1/2	SLR50S	077485
2	SLR60S	077486
2-1/2	SLR70S	077480
3	SLR80S	077488
3-1/2	SLR90S	077487
4	SLR100S	077489



* All access fittings are CSA certified and all access fittings except Type TB are UL listed for wet locations. Supplied with threaded brass inserts, combination brass head screws and PVC gasketing.

* Stainless steel screws are available upon request.

ACCESS FITTINGS* TYPE LL



Hub Size (inches)	Part Number	Product Code
1/2	SLL10S	077521
3/4	SLL20S	077522
1	SLL30S	077523
1-1/4	SLL40S	077524
1-1/2	SLL50S	077525
2	SLL60S	077526
2-1/2	SLL70S	077527
3	SLL80S	077528
3-1/2	SLL90S	077530
4	SLL100S	077529

ACCESS FITTINGS* TYPE T



Hub Size (inches)	Part Number	Product Code
1/2	ST10S	077461
3/4	ST20S	077462
1	ST30S	077463
1-1/4	ST40S	077464
1-1/2	ST50S	077465
2	ST60S	077466
2-1/2	ST70S	077467
3	ST80S	077468
3-1/2	ST90S	077571
4	ST100S	077572

* All access fittings are CSA certified and all access fittings except Type TB are UL listed for wet locations. Supplied with threaded brass inserts, combination brass head screws and PVC gasketing.

* Stainless steel screws are available upon request.

ACCESS FITTINGS CONT'D

ACCESS FITTINGS* TYPE C

Hub Size (inches)	Part Number	Product Code
1/2	SC10S	077501
3/4	SC20S	077502
1	SC30S	077503
1-1/4	SC40S	077504
1-1/2	SC50S	077505
2	SC60S	077506
2-1/2	SC70S	077507
3	SC80S	077508
3-1/2	SC90S	077510
4	SC100S	077509



ACCESS FITTINGS* TYPE E

Hub Size (inches)	Part Number	Product Code
1/2	SE10S	077561
3/4	SE20S	077562
1	SE30S	077563
1-1/4	SE40S	077564
1-1/2	SE50S	077565
2	SE60S	077566
2-1/2	SE70S	077567
3	SE80S	077568
3-1/2	SE90S	077569
4	SE100S	077570



* All access fittings are CSA certified and all access fittings except Type TB are UL listed for wet locations. Supplied with threaded brass inserts, combination brass head screws and PVC gasketing.

* Stainless steel screws are available upon request.

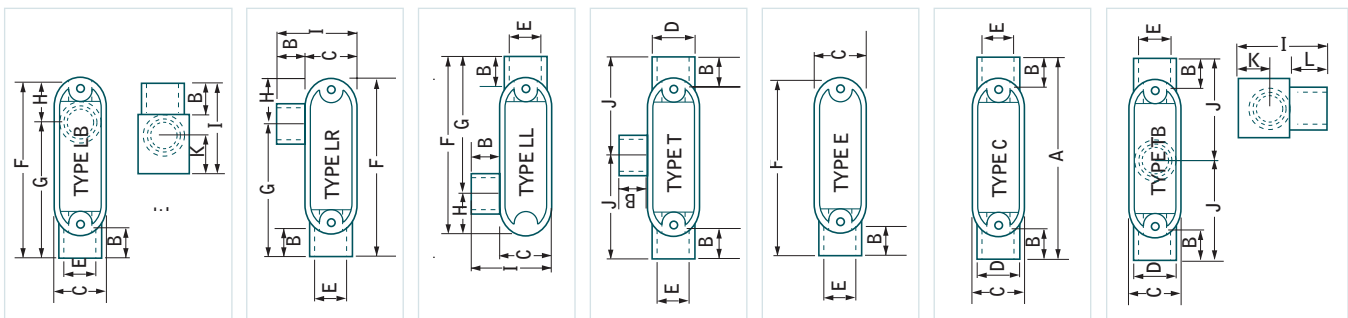
ACCESS FITTINGS* TYPE TB



Hub Size (inches)	Part Number	Product Code
1/2	STB10S	077451
3/4	STB20S	077452
1	STB30S	077453
1-1/4	STB40S	077454
1-1/2	STB50S	077455
2	STB60S	077456

ACCESS FITTING DIMENSIONS

Size (inches)	A (inches)	B (inches)	C (inches)	D (inches)	E (inches)	F (inches)	G (inches)	H (inches)	I (inches)	J (inches)	K (inches)	L (inches)
1/2	5.606	0.639	1.268	1.100	0.840	4.337	4.095	1.297	2.487	2.280	1.005	0.750
3/4	5.606	0.810	1.536	1.325	1.050	5.395	4.095	1.297	2.487	2.803	1.005	0.810
1	6.500	0.910	1.700	1.100	1.335	6.250	4.750	1.500	2.075	3.250	1.125	1.115
1-1/4	7.900	1.050	2.300	2.250	1.660	7.625	5.750	1.750	3.575	3.950	1.562	1.300
1-1/2	8.500	1.125	2.675	2.250	1.900	8.250	6.500	1.750	3.938	4.250	1.656	1.425
2	10.875	1.160	3.188	2.820	2.375	10.531	8.156	2.344	4.535	5.438	1.968	1.160
2-1/2	14.600	1.750	4.500	3.950	2.870	13.630	9.825	3.805	6.240	7.300	2.610	-
3	14.600	1.900	4.500	3.950	3.510	13.630	10.897	2.733	6.240	7.300	2.610	-
3-1/2	17.040	2.125	5.536	5.000	4.000	16.000	11.465	4.535	7.500	8.535	2.975	-
4	17.040	2.125	5.536	5.000	4.530	16.000	11.465	4.535	7.500	8.535	2.975	-



* All access fittings are CSA certified and all access fittings except Type TB are UL listed for wet locations. Supplied with threaded brass inserts, combination brass head screws and PVC gasketing.

* Stainless steel screws are available upon request.

END BELLS & SERVICE ENTRANCE FITTINGS

END BELLS

Size (inches)	Part Number	Product Code
1/2	EB-10	077406
3/4	EB-15	077085
1	EB-20	077323
1-1/4	EB-25	077324
1-1/2	EB-30	077325
2	EB-35	077326
2-1/2	EB-40	077327
3	EB-45	077328
3-1/2	EB-50	077329
4	EB-55	077330
5	EB-60	077331
6	EB-65	077332



SERVICE ENTRANCE FITTINGS

Size (inches)	Part Number	Product Code
1/2	EF10	077281
3/4	EF15	077282
1	EF20	077283
1-1/4	EF25	077284
1-1/2	EF30	077285
2	EF35	077286
2-1/2	EF40	077287
3	EF45	077288
3-1/2	EF50	077289
4	EF55	077290



METER OFFSETS & HUBS

METER OFFSETS



Size (inches)	Part Number	Product Code
1-1/4	MO25	077941
2	MO35	077942

LONG METER OFFSETS

Fabricated



Size (inches)	Part Number	Product Code	A (inches)	B (offset)
1-1/4	LMO25	069641	12	0.91
1-1/2	LMO30	069645	12	1.61
2	LMO35	069646	14	1.50

METER HUBS



Size (inches)	Part Number	Product Code
1-1/4	MHU25	077961
1-1/2	MHU30	077963
2	MHU35	077965
2-1/2	MHU40	077967
3	MHU45	077968

PULL ELBOW, RISERS & PLUGS

“TWO IN ONE” PULL ELBOW

The “two in one” access pull elbow reduces inventory costs (3/4" hub fitting supplied with 3/4" x 1/2" reducers). This pull elbow is approved for wet locations and provides for easy wire pulling. It is manufactured from high impact, nonconducting and noncorroding PVC.

Size (inches)	Part Number	Product Code
1/2 or 3/4	PE15/10	077491



SLIP METER RISERS

Size (inches)	Part Number	Product Code	L (inches)	A (inches)
2	SMR35TA	068371	25.188	23.088
2-1/2	SMR40TA	068372	25.188	22.258
3	SMR45TA	068373	25.188	21.133
4	SMR55TA	068374	25.188	21.973

Schedule 40 Rigid PVC Conduit



POLY PLUGS

Size (inches)	Part Number	Product Code
2 - 2-1/2	PP3540	077433
3 - 3-1/2	PP4550	077434
4	PP55	077435
5	PP60	077436
6	PP65	077437



STRAIN RELIEF CONNECTORS

NONMETALLIC THREADED STRAIN RELIEF CONNECTORS

c/w "O" Ring, Locknut & 4 Grommets

Scepter's Nonmetallic Strain Relief Connectors are supplied with all the components you need for a complete connection. The connector body, a selection of grommets and compression rings accepting a range of cord dimensions, a sealing 'O' ring and metallic locknut are all supplied in one package. Available in 1/2" and 3/4" threaded hub and 3/4" PVC socket solvent weld configurations to accommodate a variety of applications.

Size (inches)	Part Number	Product Code
1/2	TSRCU10	077244
3/4	TSRCU15	077261







SOCKET WELD STRAIN RELIEF CONNECTOR

c/w 4 Grommets



Size (inches)	Part Number	Product Code
3/4	SRCU15	077209

GROMMET DIMENSIONS

	FROM (inches)	TO (inches)		FROM (inches)	TO (inches)
	Ø = .240	Ø = .315		Ø = .420	Ø = .515
	Ø = .320	Ø = .415		Ø = .520	Ø = .615

LIGHT FIXTURES & CONDUIT REPAIR KIT

CONDUIT FITTINGS

CONDUIT REPAIR KIT

NONMETALLIC VAPOR-PROOF INCANDESCENT LIGHT FIXTURE

Sceptalight is constructed of noncorroding, nonconductive, high impact glass reinforced polyester resin. It features a one-piece fixture base with threaded hub entry offering a 15 cubic inch volume. Sceptalight's utility fixture is approved for use with 75°C wiring and rated for use with 150 Watt A21 medium base incandescent lamp. Integral molded mounting feet provide for easy installation and ensure a secure support.

Description Fixture c/w	Part Number	Hub	Product Code
Clear Glass Globe	LVPE 150-10/15	1/2" - 3/4"	077493
Heat Resistant Clear Glass Globe	LVPEHRC 150	1/2" - 3/4"	077578
Heat Resistant Red Glass Globe	LVPEHRR 150	1/2" - 3/4"	077599
Heat Resistant Blue Glass Globe	LVPEHRB 150	1/2" - 3/4"	077579
Heat Resistant Green Glass Globe	LVPEHRG 150	1/2" - 3/4"	077597
Heat Resistant Amber Glass Globe	LVPEHRA150	1/2" - 3/4"	077598
Replacement Clear Glass Globe	LGC 150	-	077247
Nonmetallic Clamp-on Guard	LVPU150	-	077558
Clear Glass Globe & Clamp-on Guard	LVPE150-1015	1/2" - 3/4"	077402
Light Fixture with Polycarbonate Globe*	LVPE150-PCC	1/2" - 3/4"	077181



LVPE 15/10



LVPE150-PCC



LVPU150

* Approved for use with 60W MAX Type A lamp.

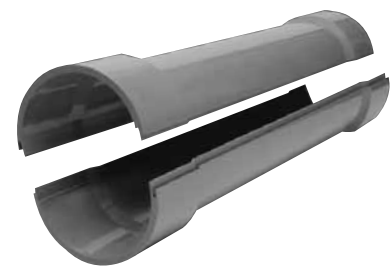
EPR KITS FOR CONDUIT REPAIR

EPR Kits from IPEX are the first total repair systems for broken and damaged PVC conduit. They offer fast and easy repairs for damaged conduit caused by actions such as earth excavation, horizontal and core drilling.

With unique interlocking joints, the EPR Kits' two half shell bell by bell pieces simply close around the installed wire and cable. Using standard PBV solvent cement, EPR Kits are quickly and easily assembled and connected, restoring the conduit to its original form.

EPR Kits are manufactured of high-impact and non-conductive PVC, ensuring a life long quality repair for your system. All sizes are 24 inches in length.

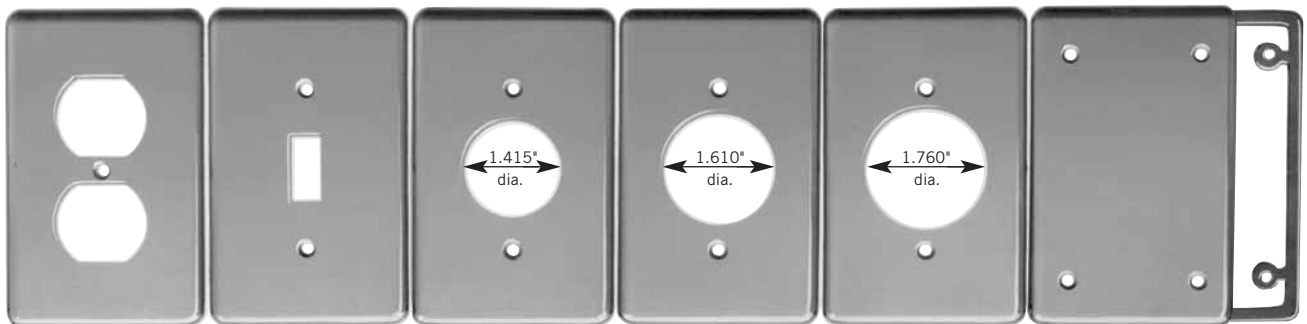
Size (in) (inches)	Part Number	Product Code
1-1/4	EPR25	077976
1-1/2	EPR30	077971
2	EPR35	077972
2-1/2	EPR40	077973
3	EPR45	077974
4	EPR55	077975
5	EPR60	077977
6	EPR65	077979



COVERS & COVER PLATES

F SERIES - SINGLE GANG PLATES

Description	Part Number	Product Code
Duplex Receptacle	DRC15/10	077617
Toggle Switch	TSC15/10	077616
Single Receptacle	20RC15/10	077618
Single Receptacle	20-3RC15/10	077619
Single Receptacle	30-3RC15/10	077620
Blank c/w Gasket	BRC15/10	077611
PVC Gasket	GASK15/10	077621



DRC15/10

TSC15/10

20RC15/10

20-3RC15/10

30-3RC15/10

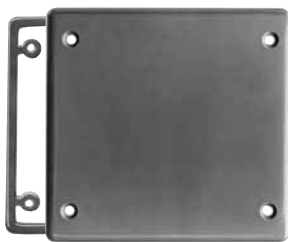
BRC15/10

GASK
15/10

COVERS & COVER PLATES CONT'D

F SERIES - DOUBLE GANG PLATES

Description	Part Number	Product Code
Blank Cover c/w Gasket	BRC20-2	077614
Double Switch	TSC20-2	077738
Double Duplex Receptacle	DRC20-2	077740
Combo Switch Duplex Receptacle	TSDC20-2	077739
PVC Gasket	GASK20-2	077743



GASK20-2



TSC20-2



DRC20-2

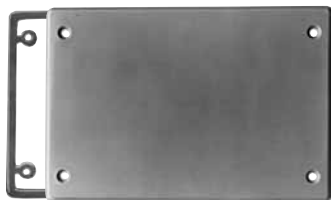


TSDC20-2

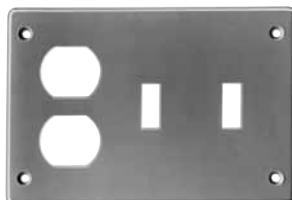
BRC20-2

F SERIES - TRIPLE GANG PLATES

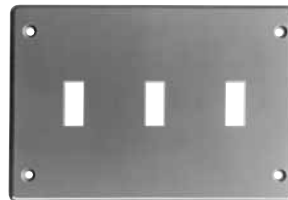
Description	Part Number	Product Code
Triple Receptacle	DRC20-3	077747
Combo Switch Receptacle	DSDR20-3	077745
Triple Switch	TSC20-3	077744
Combo Switch Receptacle	TSDC20-3	077746
Blank Cover c/w Gasket	BRC20-3	077748
PVC Gasket	GASK20-3	077749



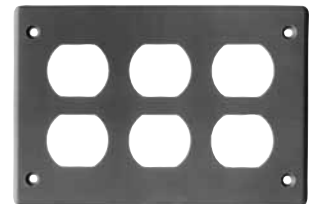
GASK20-3



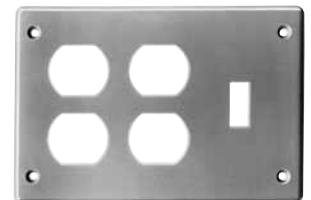
DSDR20-3



TSC20-3



DRC20-3



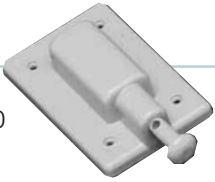
TSDC20-3

BRC20-3

SINGLE GANG WEATHERPROOF COVERS

Weatherproof covers, with lids closed, are UL listed for wet locations.

VPT15/10



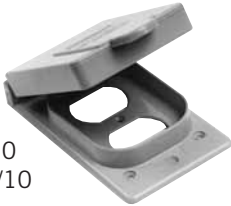
VSC15/10



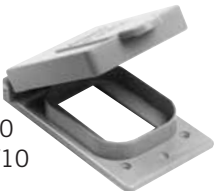
WTG15/10



WDR15/10
RWDR15/10



WGF15/10
RWGF15/10



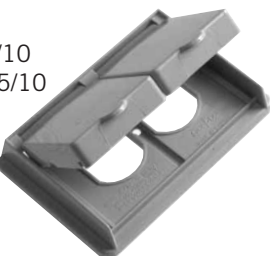
WTL15
WTL20
WTL30



WTL50



WDRE15/10
RWDRE15/10



Description

Device
Opening (in)

Part
Number

Product
Code

Plunger-style Switch Cover

VPT15/10

077630

Toggle Switch Cover

VSC15/10

077612

Grey Toggle Switch Cover

WTG15/10

077606

Grey Duplex Receptacle

WDR15/10

077993

White Duplex Receptacle

RWDR15/10

077786

Grey Ground Fault Receptacle

WGF15/10

077785

White Ground Fault Receptacle

RWGF15/10

077787

Single Receptacle Device 15 AMP

1.375

WTL15

077992

Single Receptacle Device 20 AMP

1.625

WTL20

077994

Single Receptacle Device 30 AMP

1.722

WTL30

077991

Single Receptacle Device 50 AMP

2.187

WTL50

077951

Grey Double Door Duplex Receptacle

WDRE15/10

077087

White Double Door Duplex Receptacle

RWDRE15/10

077408

Gasket for W Series Cover
(except WDRE & RWDRE)

GASKW

077755

Gasket for WDRE & RWDRE Covers

GASKDD

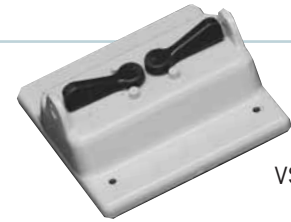
072225

* Gaskets are included with all weatherproof covers.

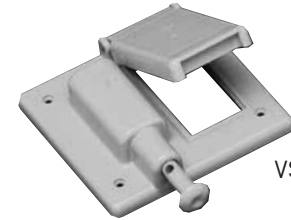
COVERS & COVER PLATES CONT'D

DOUBLE GANG WEATHERPROOF COVERS

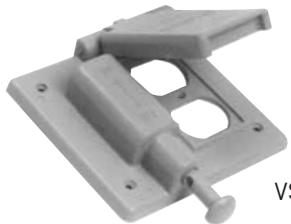
Description	Part Number	Product Code
Toggle Switch Cover	VSC20-2	077741
Combination Switch Cover & GFI Receptacle	VSRC20-2	077742
Combination Switch Cover & Duplex Receptacle	VSDR20-2	077752
Combination Switch Cover & Single Receptacle	VSRR20-2	077753
Double Door GFCI Cover	VSGG20-2	077096
Double Door Duplex Cover	VSDD20-2	077097
Gasket for Double Gang (except VSGG20-2 & VSDD20-2)	GASK20-2	077743
Gasket for VSGG20-2 and VSDD20-2 Double Gangs	GASKV20-2	072227



VSC20-2



VSRC20-2



VSDR20-2



VSRR20-2



VSGG20-2

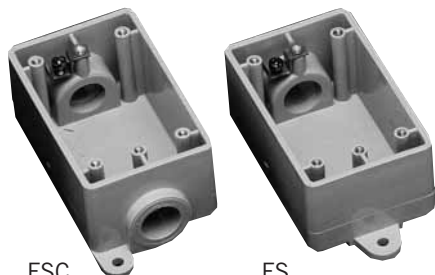


VSDD20-2

* Gaskets are included with all weatherproof covers.

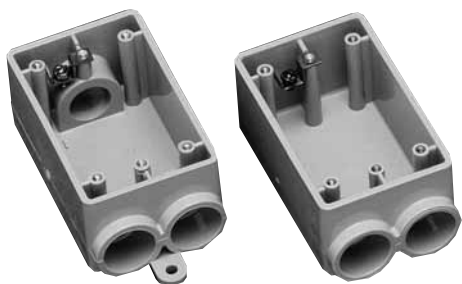
* VSGG20-2 and VSDD20-2 are universal and will fit on most PVC and metal boxes.

F SERIES SINGLE GANG BOXES



FSC

FS



FSCC

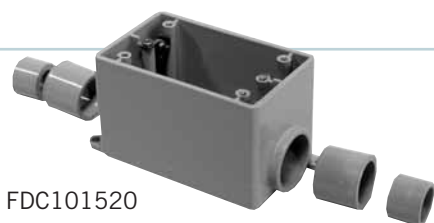
FSS

Outside Dimensions:
Length, 4-9/16" - Width, 2-13/16" - Depth, 2"

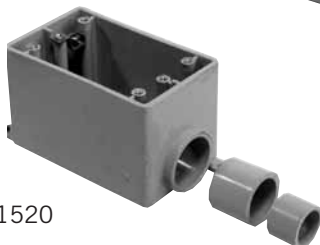
Hub Size (inches)	Part Number	Product Code	Volume (in3)
1/2	FSC10	077607	17.0
3/4	FSC15	077608	17.0
1/2	FS10	077601	17.5
3/4	FS15	077602	17.5
1/2	FSCC10	077622	16.3
3/4	FSCC15	077623	16.3
1/2	FSS10	077604	17.0
3/4	FSS15	077605	17.0

Note: 10 = 1/2" Hub, 15 = 3/4" Hub

F SERIES SINGLE GANG DEEP BOXES



FDC101520



FDS101520



FD Blank

Outside Dimensions:

Height, 4 9/16" – Width, 2 13/16" – Depth 2 3/4", Cubic Inches = 35.30

With the exception of the FD Blank Box, Scepter FD Series Single Gang Deep Boxes are molded with 1" conduit hubs and supplied with reducer bushings. The conduit hub(s) are field modified as 1/2", 3/4" or 1" to accommodate job-site requirements. The appropriate quantity of 1" x 3/4" and 3/4" x 1/2" reducers to create the desired hub size are packaged with each FD Series Single Gang Deep Box.

Hub Size (inches)	Part Number	Product Code	Volume (in3)
1/2, 3/4, 1	FDC101520	077291	26.0
1/2, 3/4, 1	FDS101520	077299	26.8
* BLANK	FD BLANK	077603	29.2
347 VOLT	FD347	077610	29.2

Note: 10 = 1/2" Hub, 15 = 3/4" Hub, 20 = 1" Hub

* Not UL Listed

Note: All F Series boxes are supplied with integral mounting feet, threaded brass inserts and grounding clips.

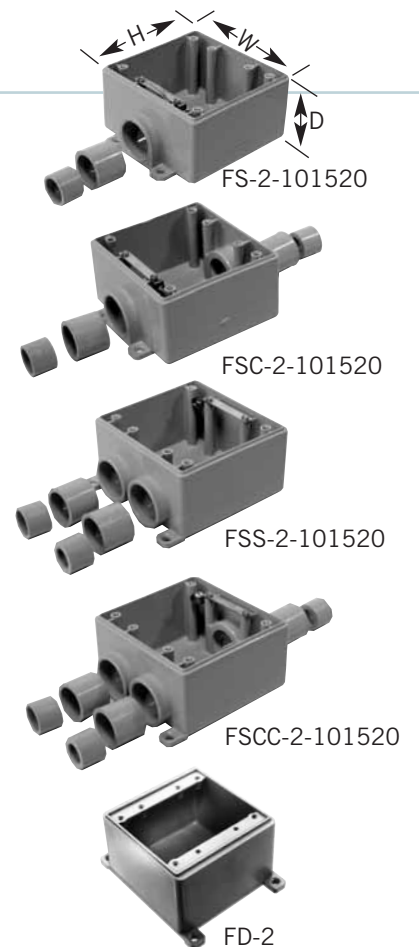
BOXES CONT'D

F SERIES DOUBLE GANG BOXES

FS-2 cu.in = 39.5, FSC-2 & FSS-2 cu.in. = 37.0, FSCC-2 cu.in. = 36.0 With the exception of the FD-2 Blank Box, Scepter F Series Double Gang Boxes are molded with 1" conduit hubs and supplied with reducer bushings. The conduit hub(s) are field modified as 1/2", 3/4" or 1" to accommodate job-site requirements. The appropriate quantity of 1" x 3/4" and 3/4" x 1/2" reducers to create the desired hub size are packaged with each F Series Double Gang Box.

Hub Size (inches)	Part Number	Product Code	OD (inches)			Volume (in ³)
			H	W	E	
1/2, 3/4, 1	FS-2-101520	077440	4.50	4.75	2.5	39.5
1/2, 3/4, 1	FSC-2-101520	077441	4.50	4.75	2.5	37.0
1/2, 3/4, 1	FSS-2-101520	077442	4.50	4.75	2.5	37.0
1/2, 3/4, 1	FSCC-2-101520	077443	4.50	4.75	2.5	36.2
* Blank	FD-2	077734	4.75	4.75	3.0	52.0

* Not UL Listed

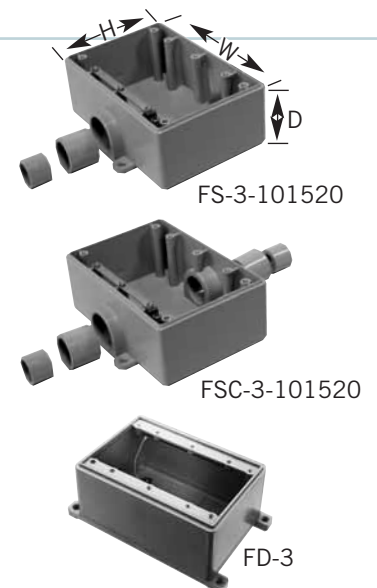


F SERIES TRIPLE GANG BOXES

With the exception of the FD-3 Blank Box, Scepter F Series Triple Gang Boxes are molded with 1" conduit hubs and supplied with reducer bushings. The conduit hub(s) are field modified as 1/2", 3/4" or 1" to accommodate job-site requirements. The appropriate quantity of 1" x 3/4" and 3/4" x 1/2" reducers to create the desired hub size are packaged with each F Series Triple Gang Box.

Hub Size (inches)	Part Number	Product Code	OD (inches)			Volume (in ³)
			H	W	D	
1/2, 3/4, 1	FS-3-101520	077337	4.5	6.6	2.5	56.0
1/2, 3/4, 1	FSC-3-101520	077438	4.5	6.6	2.5	54.0
* Blank	FD-3	077737	4.5	6.6	3.0	73.8

* Not UL Listed



Note: All F Series boxes are supplied with integral mounting feet, threaded brass inserts and grounding clips or bars.

OCTAGONAL BOXES*



Octagonal Boxes are shipped complete with cover, gasket, 4 reducing bushings (3/4" x 1/2"), and 4 sealing caps to be installed from inside box to seal off unused entry hubs.

Size (inches)	Part Number	Hub Size (inches)	L (inches)	H (inches)	Volume (in ³)	Product Code
4 x 1-1/2	OB15/10	1/2 - 3/4	4	1.680	15.5	077983*
4 x 2-1/8	OB20	1	4	2.250	21.5	077984*

OCTAGONAL BOX EXTENSION RINGS



Size (inches)	Part Number	Product Code
4 x 1 deep	XR20	077989
4 x 2 deep	XR35	077990

Note: Octagonal Boxes are not designed for supporting light fixtures.

THREADED JUNCTION BOXES



LFB150C

LFB150T

Scepter's Threaded Junction Boxes are corrosion resistant, non-conductive and incorporate high-temperature silicone gaskets and brass hardware to withstand extreme temperature variations. Manufactured from glass-reinforced thermoplastic polyester resin, these boxes can endure extreme temperatures (material temperature range -40°F to +302°F).

Size (inches)	Part Number	Product Code
4 - 3/4" threaded hubs	LFB150C	077250
4 - 3/4" threaded hubs c/w 1/2" threaded hole in cover	LFB150T	077251

BOXES CONT'D

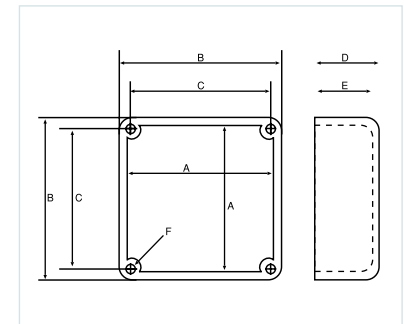
PVC MOLDED JUNCTION BOXES

Junction boxes are supplied with threaded brass insert, brass screws, PVC gasketing and mounting feet. Nylon and stainless steel screws, as well as larger sizes of fabricated junctions box, are available upon request.

(F = Threaded brass insert size.)



Part Number	Product Code	A (inches)	B (inches)	C (inches)	D (inches)	E (inches)	F (inches)	Volume (in. ³)
JB442	077659	3.675	4.000	3.450	2.125	2.000	8-32	26.5
JB444	077696	3.675	4.000	3.450	4.188	3.750	8-32	51.5
JB446	077669	3.675	4.000	3.450	6.225	6.000	8-32	78.0
JB552	077670	4.680	5.000	4.485	2.000	1.845	8-32	40.0
JB664	077697	6.000	6.375	5.813	4.188	4.000	10-32	138.0
JB666	077698	6.000	6.375	5.813	6.188	6.000	10-32	211.0
JB884	077664	8.075	8.625	7.966	4.230	4.005	1/4-20	434.0
JB887	077671	8.100	8.625	7.966	7.250	7.035	1/4-20	248.0
JB12124	077672	12.085	12.580	11.874	4.256	4.030	1/4-20	577.4
JB12126	077666	12.085	12.580	11.874	6.240	6.025	1/4-20	846.0
JB12128	077668	12.085	12.580	11.874	8.250	8.025	1/4-20	1102.0



Junction boxes are:

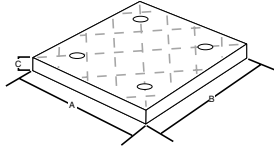
NEMA 1, 2, 3, 4, 4x, 6P, 12, 13 UL listed for wet locations.

FABRICATED BOXES

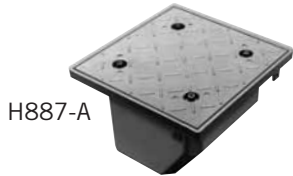
Unflanged PVC fabricated boxes of any size may be made to customers' specifications and come complete with lids, gaskets and screws.

These boxes are not UL Listed and are not returnable.

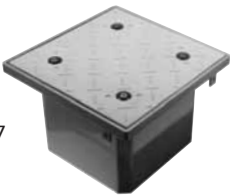
FLANGED BOX W FIBER-REINFORCED SAFETY TREAD COVER



Scepter's Flanged 'H' Series Junction Boxes provide H10 Highway Loading equivalent to handling a 500-psi load. The fiber-reinforced safety tread cover secures using recessed Hex Key fastening hardware offering a simple installation while reducing the opportunity for tampering.



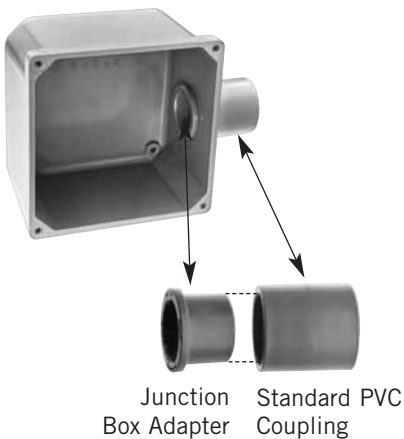
H887-A



H887

Part Number	Product Code	Box ID (inches)			Lid Dimensions (inches)			Volume (in ³)
		L	W	D	A	B	C	
H664	077685	6	6	4 1/4	9.0	9.0	0.60	138.0
H666	077686	6	6	6 1/4	9.0	9.0	0.60	211.0
H884	077687	8	8	4 1/4	11.5	11.5	0.75	248.0
H886	077688	8	8	6 1/4	11.5	11.5	0.75	434.0
H887	077689	8	8	7 1/4	11.5	11.5	0.75	434.0
H887-A	077692	8	8	7 1/4	11.5	11.5	0.75	434.0

JUNCTION BOX ADAPTERS



Size (inches)	Part Number	Product Code
1/2	JBA10	077721
3/4	JBA15	077722
1	JBA20	077723
1-1/4	JBA25	077724
1-1/2	JBA30	077725
2	JBA35	077726
2-1/2	JBA40	077727
3	JBA45	077728
3-1/2	JBA50	077729
4	JBA55	077730

BOXES CONT'D

NONMETALLIC FLOOR BOX, COVER & METAL COVER ADAPTER

Installation is quick and simple, with our nonmetallic floor box and covers, saving both time and money over similar metallic assemblies.

Scepter's floor box and duplex receptacle covers are constructed from high impact, noncorroding and nonconducting PVC. The flush-mount covers are available in custom colors and are shipped with a levelling ring complete with a grounding clip. Metal cover adapter kits are also available, allowing you to adapt to metal floor plates. Our 6" deep floor box allows flexibility for various concrete floor pours, while our 4-3/4" width offers easy access and ample wire room. The box comes complete with 2 - 1" and 2 - 3/4" hub openings.

All boxes are shipped complete with reducer plugs for added versatility.

Color Description	Part Number	Product Code
Floor Box Base (includes disposable protective cap and reducer plugs)	FB	076954
Floor Box Base c/w Levelling Ring Adapter (includes disposable protective cap, reducer plugs and leveling ring adapter)	FBKIT	077068
Metal Cover Adapter Kit (includes levelling ring, metal cover adapter and 2 gaskets)	FBMAK	076953
Universal Levelling Ring Adapter	LRA-U	076606
Floor Box Duplex Receptacle Cover (Nonmetallic) (includes flush mount cover, blank cover & gasket)		
Brown	FBDRCB	076955
Gold	FBDRCG	076949
Grey	FBDRCGr	076600
Light Almond	FBDRCA	076605
Tri-Service Universal Divider Kit (includes upper and lower dividers, riser tube and 4 grommets)	FBUDK	077948
Y Connector (3/4")	FBYC	077499



FB



FBMAK



LRA-U



FBDRCB
FBDRCG
FBDRCGr
FBDRCA



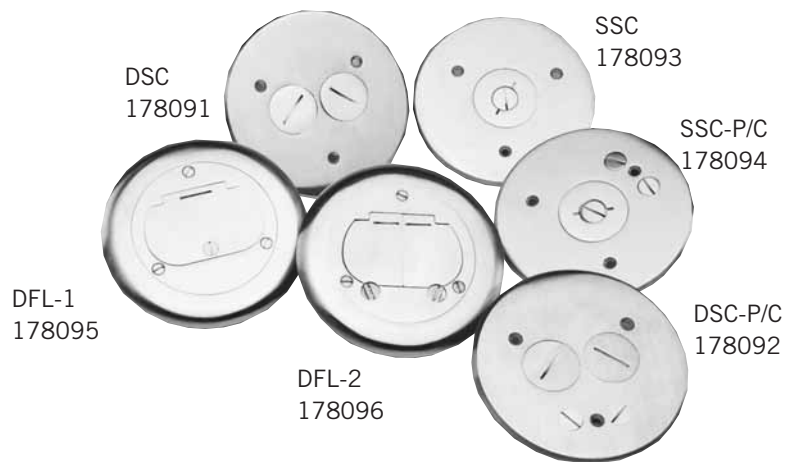
FBUDK



FBYC

BRASS COVER PLATES FOR NONMETALLIC FLOOR BOX

- Brass cover plates offer a one-piece design measuring 5-3/4" diameter.
- Available in a variety of styles accommodating power (single or duplex receptacle) and communication needs.
- Install to the FB box using the Universal Leveling Ring Adapter.



CEMENTS & PRIMERS

CONDUIT CEMENT

c/w Applicator Cap

Scepter 100 - Conduit Cement

Size	Part Number	Product Code
250ml (1/2 Pint)	S100PT5	078883
500ml (Pint)	S100PT	078884
1L (Quart)	S100QT	078885
4L (Gallon)	S100GAL	078887



Scepter 100 - Cold Weather / Wet Weather Cement

Size	Part Number	Product Code
500ml (Pint)	CWC10	078503
1L (Quart)	CWC20	078886

PRIMER

c/w Applicator Cap

Size	Part Number	Product Code
250ml (1/2 Pint)	C100PT5	078163
500ml (Pint)	C100PT	078174
1L (Quart)	C100QT	078175

