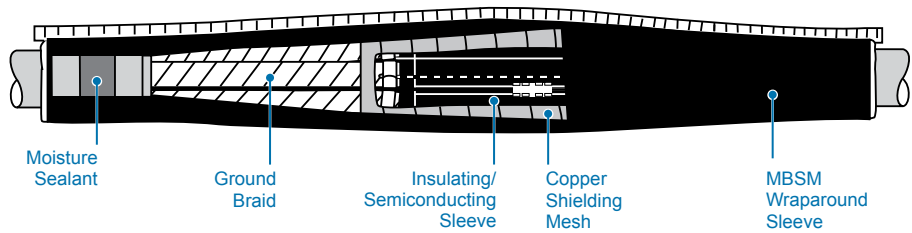


C_HVS_3

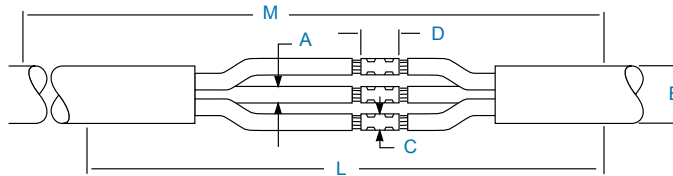
HVS-3 In-Line Splices for 3/C Shielded Cable (5-25 kV)

TE Connectivity's Raychem three conductor cable splice kits are designed to rebuild all layers of the cable. These kits meet the same performance criteria as our single conductor splice kits.

- Rated to IEEE 404.
- For use on copper tape, wire shield, lead sheath, and UniShield cables.



Selection Information: dimensions in inches (millimeters)



Catalog Number	Conductor Size (AWG/kcmil)		Insulation Diameter 'Min.- Max.'	Jacket O.D. (Min.)	Maximum Connector Dimensions		Kit Installed Length	Required Installation Space
			A	B	C	D	L	M
HVS-3-820S (5 kV) (8 kV)								
HVS-3-821S	#6-2/0*	#6-#2	0.35-0.65 (9-17)	0.90 (23)	0.50 (13)	3.0 (76)	40 (1016)	50 (1270)
HVS-3-822S	3/0-300*	#1-4/0	0.55-0.90 (14-23)	1.30 (33)	0.75 (19)	4.25 (108)	48 (1219)	58 (1473)
HVS-3-823S	350-750*	250-350	0.80-1.25 (20-32)	1.30 (33)	1.10 (28)	6.0 (152)	48 (1219)	58 (1473)
HVS-3-824S	1000-1500*	500-750	1.00-1.60 (25-41)	1.55 (39)	1.45 (37)	8.0 (203)	59 (1499)	69 (1753)
HVS-3-825S		750-1000	1.30-2.25 (33-57)	1.55 (39)	1.85 (47)	8.0 (203)	59 (1499)	69 (1753)
HVS-3-1520S (15 kV)								
HVS-3-1521S		#2-4/0	0.65-1.05 (17-27)	1.30 (33)	0.90 (23)	4.25 (108)	59 (1499)	69 (1753)
HVS-3-1522S		250-350	0.90-1.30 (23-33)	1.55 (39)	1.15 (29)	5.5 (140)	59 (1499)	69 (1753)
HVS-3-1523S		500-750	1.10-1.60 (28-41)	1.55 (39)	1.60 (41)	8.0 (203)	67 (1702)	77 (1956)
HVS-3-1524S		750-1000	1.25-1.80 (32-46)	2.40 (61)	1.85 (47)	8.0 (203)	67 (1702)	77 (1956)
HVS-3-2520S (25 kV)								
HVS-3-2521S		#1-250	0.90-1.20 (23-31)	1.65 (42)	1.10 (28)	4.0 (102)	59 (1499)	69 (1753)
HVS-3-2522S		350-500	1.20-1.50 (31-38)	1.65 (42)	1.35 (34)	6.0 (152)	67 (1702)	77 (1956)
HVS-3-2523S		750-1000	1.50-1.80 (38-46)	2.50 (64)	1.85 (47)	8.0 (203)	72 (1829)	82 (2032)

Ordering information

1. Select the appropriate catalog number. All selections are based on the typical dimensions of 100% insulated cables and commonly used connectors, manufactured in accordance with AEIC standard. Nominal insulation thickness (100%): 5 kV: 90 mils. 8 kV: 115 mils., 15 kV: 175 mils., 25 kV: 260 mils. Nominal insulation thickness (133%): 15 kV: 220 mils.
2. For cables manufactured to other specifications, confirm selection with cable and connector dimensions.
3. If using 5/8kV (115-mil) cable, use 8 kV selection.
4. For an off-the-shelf 3/C splice alternative, select three appropriate single-conductor kits and one HVS-3/C accessory kit.
5. Kits do not contain connectors; order compression or solder connectors separately.
6. If external grounding and/or shield interrupting is required, order an HVS-EG-3 kit.
7. Standard package: 1 kit/box
8. Related test reports:
5/8 kV: EDR-5181
15 kV: EDR-5114
25 kV: EDR-5048
25-35 kV: EDR-5197